

# Babbie Rural & Farm Learning Museum



PLEASE CONSIDER DONATING AT:  
<https://zoomgive.com/3376/c/ruralhistory>

## HAPPY NEW YEAR 2022!

250 River Road, Peru NY 12972  
 518.643.8052

Email: [babbieag309@babbiemuseum.org](mailto:babbieag309@babbiemuseum.org)

Website: [www.babbiemuseum.org](http://www.babbiemuseum.org)

Facebook: [www.facebook.com/babbiemuseum](https://www.facebook.com/babbiemuseum)



### A MESSAGE FROM THE DESK OF THE CEO .....

Like most of you, we are waiting for life to get back to normal. It's been two years without school tours, which is one of our largest sources of income.

The museum continues to move forward as volunteers show up even when we are closed to get things done.

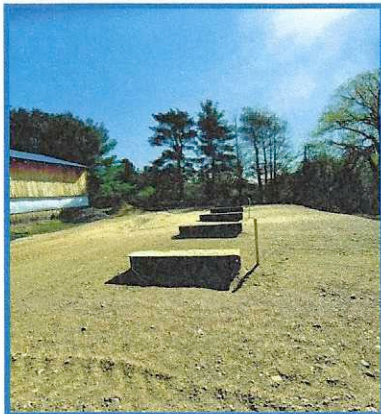
The big project this fall was the

sawmill building. Hopefully, we can demonstrate the sawmill once spring arrives. We are all excited about this possibility.

Make sure you come and check out our new displays throughout the museum and say "hi" to my two daughters—Lee and Sheila—who will be around this coming season.

Hope to see you this coming season and thank you so much for your continued support.

- Leeward Babbie, CEO



### The Sawmill Project

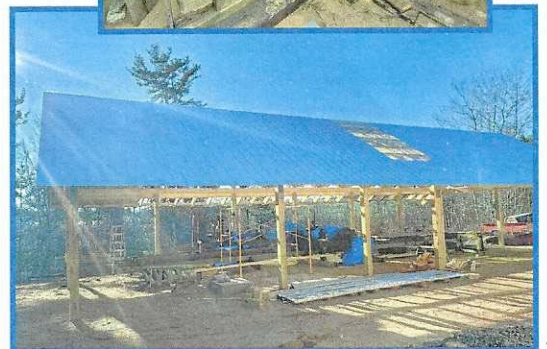
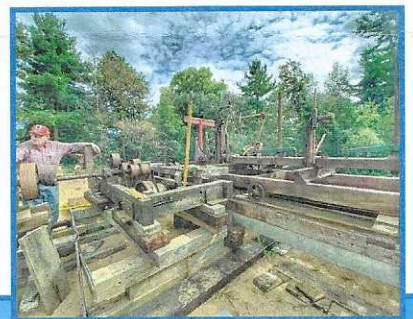


Perhaps you have read in a former newsletter about the sawmill project, involving filling in, leveling, grading, and packing the area for the sawmill project. This was in the fall of 2020.

Fast forward to the spring of 2021. In laying out the sawmill machinery, it was decided that the old wooden carriage bed was too worn out to reuse. We fabricated a new bed out of 6" x 6" steel box sections provided and delivered by Dale LaBombard. It was also decided at the time that a permanent mount for the husk, "sawjack", was required. With an excavator we dug a trench in the shape of a horse shoe 3 feet deep. With concrete forms provided by Adirondack Farms, a concrete foundation was poured at the same time for the power unit.

It was decided late in the summer that it was necessary to start construction of a building to protect the machinery from inclement weather. With the help of a power auger 16 holes were bored into the ground 4 feet deep. We then erected 16 6"x6"x14' long pressure-treated timbers into the holes and compacted the fill around them. We then installed steel beams over the proposed log deck and lumber loading area. Rafters were built with our own lumber and we put all purlins on and then the sheets of tin. Translucent panels are in and roof is now complete. - Ross S. Goodyear, Board Member

It was decided late in the summer that it was necessary to start construction of a building to protect the machinery from inclement weather. With the help of a power auger 16 holes were bored into the ground 4 feet deep. We then erected 16 6"x6"x14' long pressure-treated timbers into the holes and compacted the fill around them. We then installed steel beams over the proposed log deck and lumber loading area. Rafters were built with our own lumber and we put all purlins on and then the sheets of tin. Translucent panels are in and roof is now complete. - Ross S. Goodyear, Board Member



### Board of Directors

**Leeward Babbie, CEO**

**David Babbie**

**Ross Goodyear**

**Tom Ryan**

**Donna Ducatte**

**Todd Babbie**

**Scott Sartwell**

**Dale LaBombard**

**Bruce Sullivan**

**Lee Ledesma, Executive Director**



## 2021 Harvest Weekend — October 9th & 10th



On October 9th and 10th the Babbie Museum held its Annual Harvest Weekend. We ended up pulling out all of our hay and grain harvesting equipment, as well as our corn harvesting equipment. Weather wise, it was a beautiful weekend.

We demonstrated corn binding, corn ensilage cutting, shredder husker, hay loader, hay rake, hay fork at the cow barn, and thrashing with two thrashers.

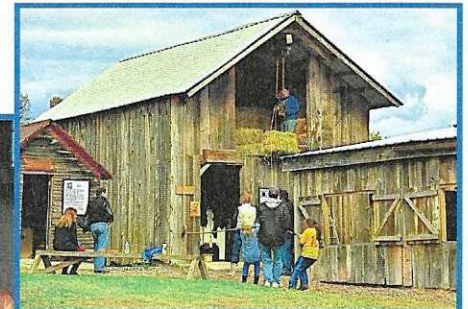
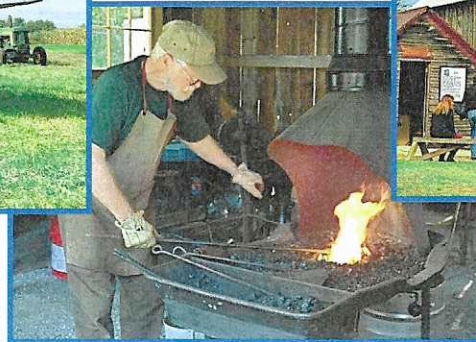
We also offered stage coach rides, corn shelling, and corn grinding in the granary.

The Blacksmith Shop and Goshen Store were also open and the Museum enjoyed our largest crowd of visitors that weekend.

I would like to thank all the volunteers for helping set up the equipment, demonstrations, and then the clean up afterwards. Hoping to see everyone for next year's events.



Yours Truly, David Babbie, President



*Amazon Smile Program — AmazonSmile is a program that donates 0.5% of your eligible purchases on Amazon to a charity of your choice. All you need to do is start your shopping at [smile.amazon.com](https://www.smile.amazon.com). The donation will be made to the museum at no extra cost to you every time you shop Amazon! Instead of going to [amazon.com](https://www.amazon.com), **go to [smile.amazon.com](https://www.smile.amazon.com) and choose Babbie Rural & Farm Learning Museum** as your charitable organization under the "Change your Charity" option. Every little bit helps so thank you in advance for choosing us as your charity.*

### **VOLUNTEERS WELCOME & APPRECIATED!**

The Babbie Rural & Farm Learning Museum is a nonprofit organization that is run 100% by volunteers. If you have a special skill or just have some time to enjoy the old fashioned fun of stepping back to a different generation, we would love to have you join us.

Some volunteer opportunities might include: driving the stagecoach, visitor guide, groundskeeper, cashier, and handy man—just to name a few.

All skills and fresh ideas are welcome! Training will be provided and this is a wonderful opportunity to help keep our local history alive.

